

XTNDConnect® Blue Manager



A Complete Bluetooth User-interface and Communication Tool for Windows Platforms

Focused on addressing the needs of the wireless personal area network (WPAN), XTNDConnect Blue Manager is a software application that enables end-users to fully manage their Bluetooth neighborhood from a single, easy-to-use interface. It is a separate application module to XTNDConnect Blue SDK for Windows, Extended Systems' Bluetooth software development kit for Windows platforms. It provides PC and peripheral manufacturers with a turnkey user interface and Bluetooth communication tool for their notebook and desktop PC products.

Designed with the end-user in mind, XTNDConnect Blue Manager gives users a positive wireless experience by making Bluetooth accessible and easy-to-use. It enables users to wirelessly connect and share information with multiple electronic devices, from personal digital assistants (PDA) and cell phones to LAN access points and digital cameras. It is a practical solution that simplifies the process of initiating connections, choosing devices, utilizing defined Bluetooth profiles and handling repetitive functions.

Key Features

XTNDConnect Blue Manager is a feature-rich application that makes Bluetooth accessible and user-friendly. It provides intuitive user screens and avoids Bluetooth-centric concepts and jargon, making it easy to learn and use. Also, it can be fully branded by PC and peripheral manufacturers to reflect their company name and application title. The user-friendly interface allows customers to:

- Locate and query devices in range
- Organize and manage devices via Connection History, Devices In Range and Favorites folders
- Perform Bluetooth functions such as transferring files*, exchanging business cards (vcards), browsing folders and synchronizing data
- Create user profiles (identities) to better manage unique computing environments, allowing users to set security settings, friendly name, and favorites lists based on different user environments
- Utilize legacy based applications for serial, DUN and LAN
- Set Bluetooth preferences for inbox location, friendly name, device type and security level

**XTNDConnect Blue Manager supports standard Drag and Drop, Send To and Copy and Paste commands for file transfers*

Wireless Personal Area Network

Extended Systems defines the wireless personal area network as an on-and-off wireless network of personal computing devices that enables people to share information, improve productivity and gain access to critical information systems. Today, users must rely on cumbersome serial cables and proprietary wires to link personal devices. But as Bluetooth makes personal area networks more convenient and usable, users will require solutions that enable them to make spontaneous wireless connections:

- For connecting personal computing devices such as a notebook computer, PDA and cellular phone for exchanging information and synchronizing data
- For connecting to other users' mobile devices for data transfers and improved communications
- For connecting to fixed networks such as the Internet or corporate LAN for temporary access to critical business information



Data Sheet

www.extendedsystems.com

XTNDConnect® Blue Manager



Extended Systems

Corporate Office
5777 N. Meeker Ave.
Boise, Idaho 83713

Customer Service Center

800-235-7576
208-322-7800
208-327-5004 – Fax

For more information

E-mail: info@extendsys.com
Web: www.extendsystems.com

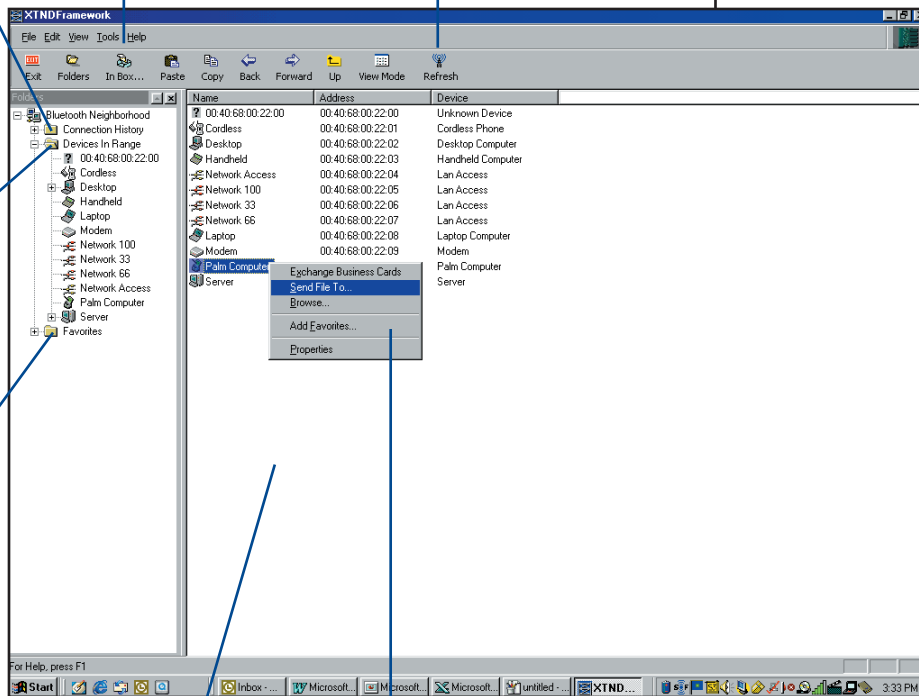
InBox
Provides one-click access to the user's Inbox by opening the linked Explorer Window.

Refresh
Enables users to initiate an inquiry of in-range devices.

Connection History
Provides a list of devices the user has previously connected to, making it easy to find and connect again.

Devices In Range
Lists all devices that are currently in range.

Favorites
Enables users to organize commonly used devices and allow them to connect to a specific device without performing a device inquiry.



Workspace
Displays contents of the folders and devices listed in the Directory Tree.

Easy-to-Use Dialogue Boxes
Provides a familiar interface to access and use Bluetooth functions without confusing Bluetooth-centric jargon.



800-235-7576

Extended Systems, a leader in mobile information management, offers solutions that enable users to access, synchronize, and retrieve information on demand. The company's products include data synchronization and management software, short-range wireless connectivity products (Bluetooth and IrDA-compliant), and client/server database management systems with remote access capabilities.

All trademarks and registered trademarks are the properties of their respective companies.
Information subject to change without notice. 9710-0689-0105